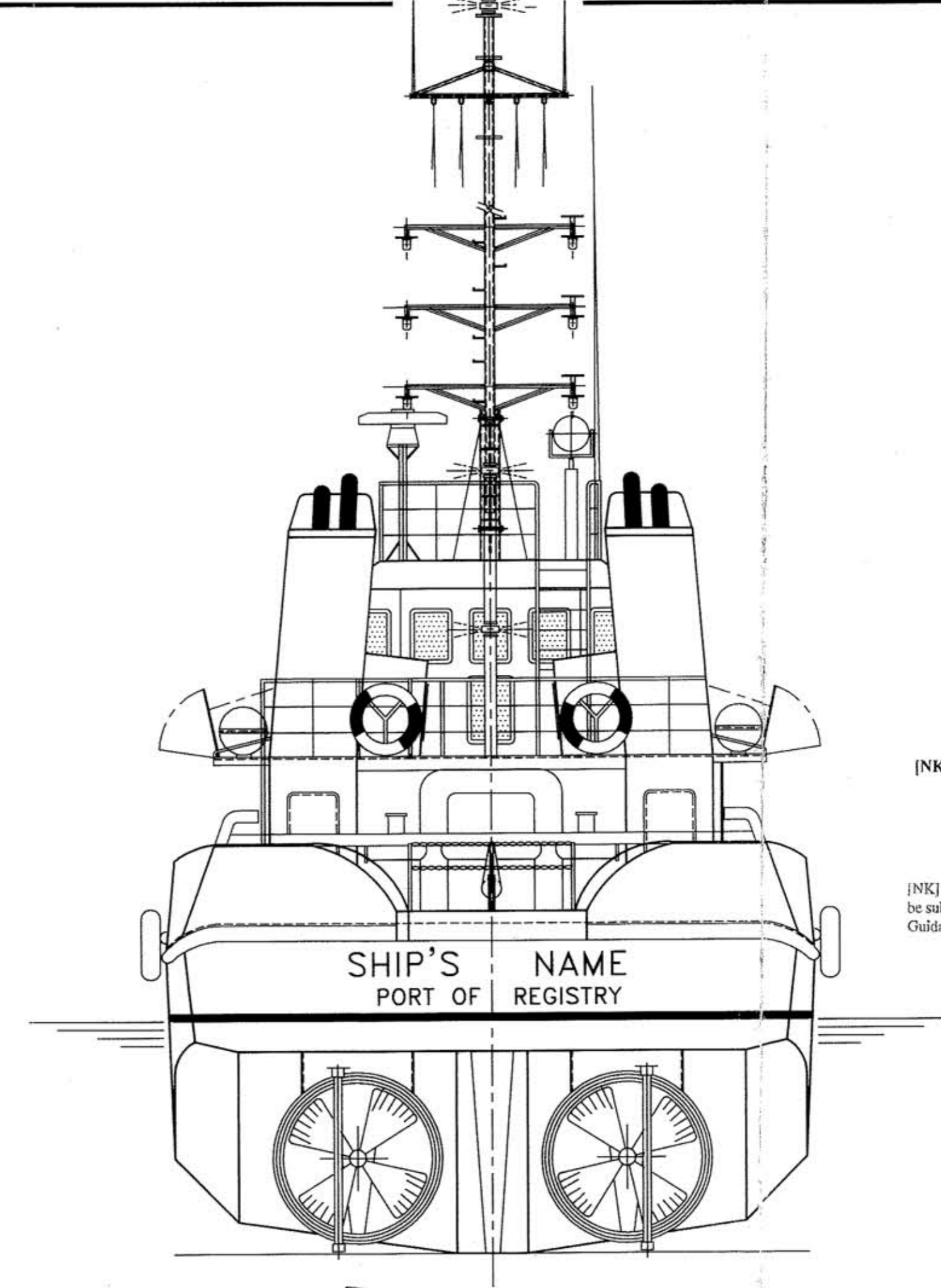


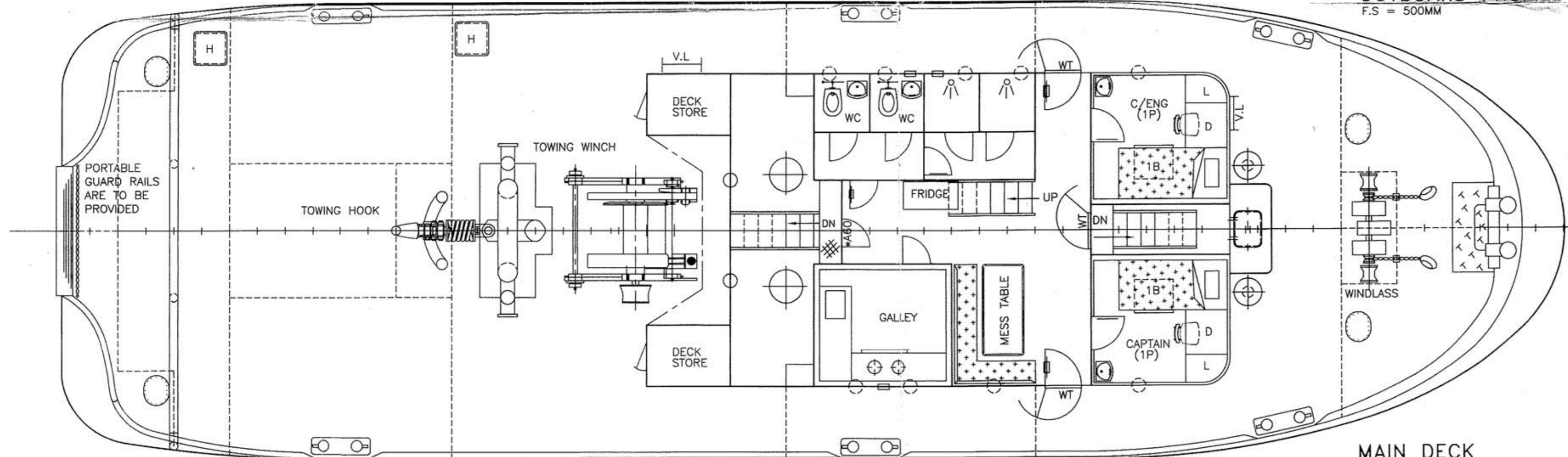
OUTBOARD PROFILE
 F.S = 500MM



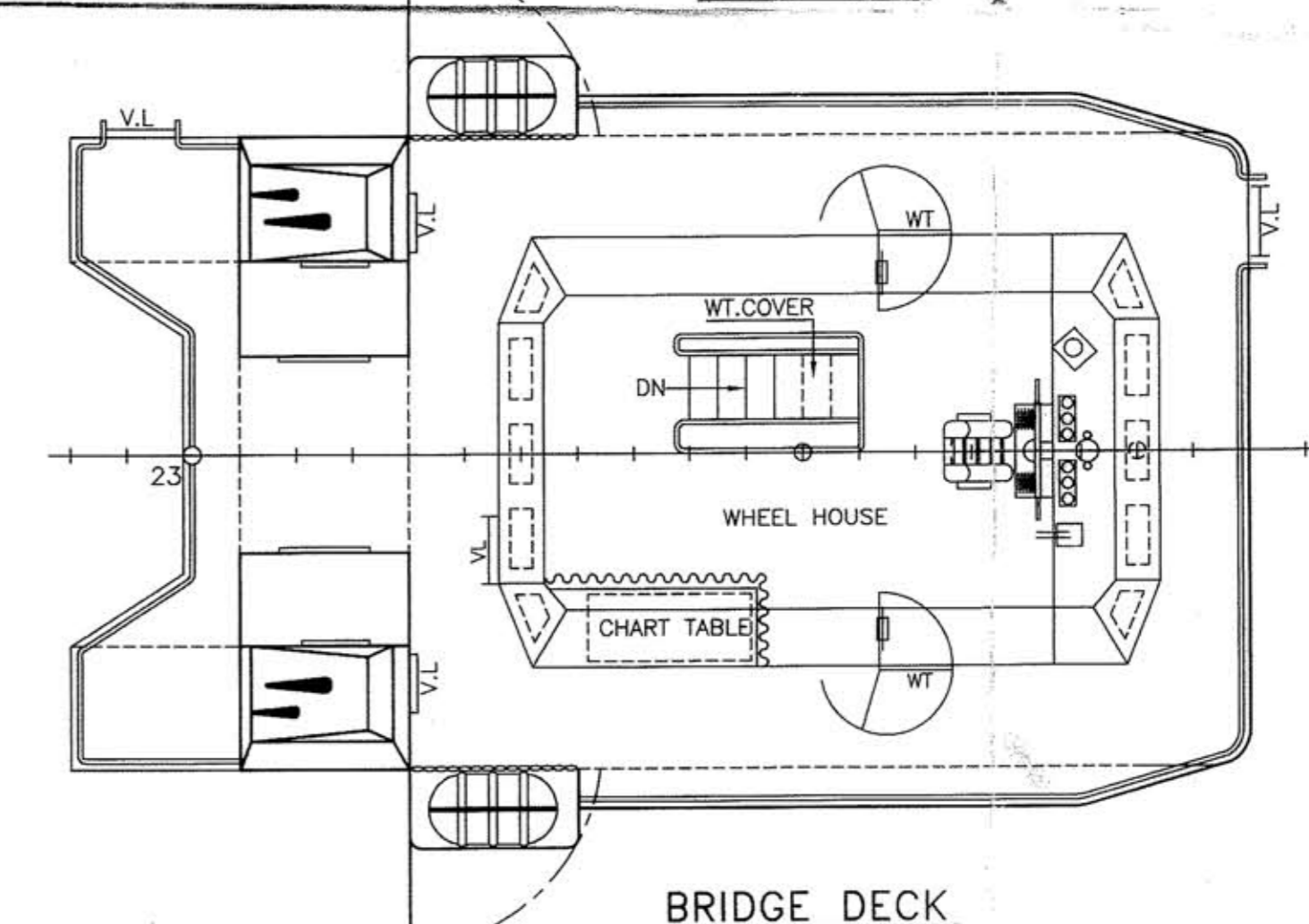
REAR VIEW

[NK] Approved in accordance with Merchant Shipping (Non-convention Ships) Safety Regulations of Singapore.

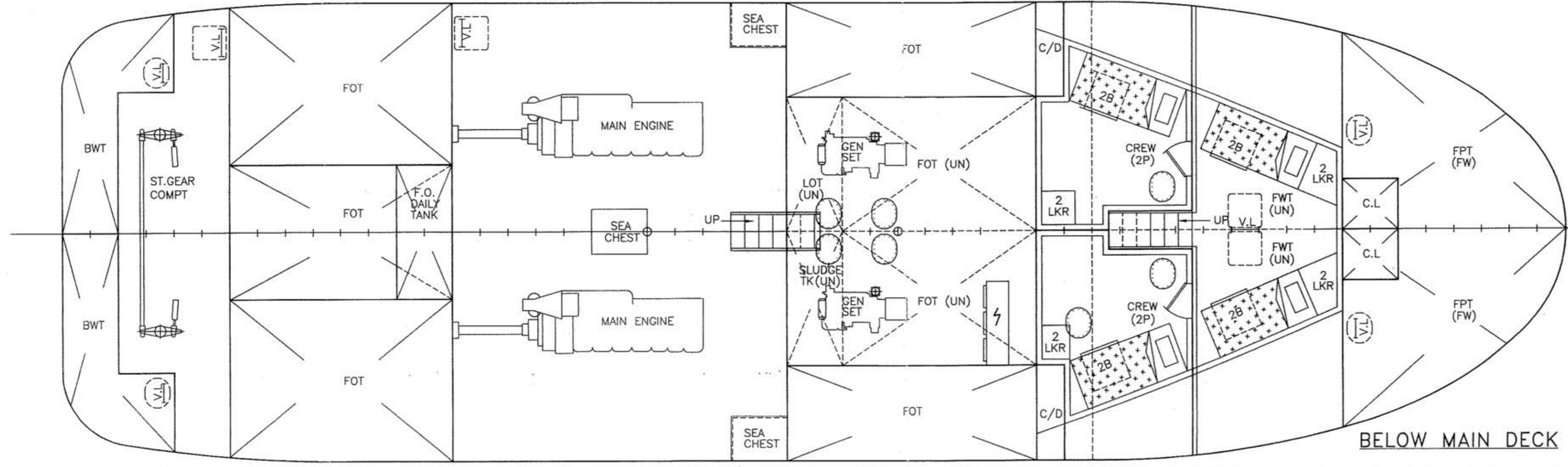
[NK] 3 copies of Preliminary Safety Booklet are to be submitted in accordance with Part B 2.1.2.3 of Guidance for the Survey and Construction of Steel Ships.



MAIN DECK



BRIDGE DECK



BELOW MAIN DECK

PRINCIPAL PARTICULARS:-

L.O.A / L BY RULE	27.0M / 24.950M
BEAM MLD	8.20M
DEPTH MLD	3.60M
DESIGNED DRAFT	2.90M
DESIGNED SPEED	ABT 12 KNOTS
CREW	10 P
FOT	105 TONS APPROX
FWT	24 TONS APPROX
MAIN ENGINES	MITSUBISHI S6R2-MTK3 1032PS@1406RPM x 2NOS
GEN SETS	78KW x 2 NOS
CLASS NOTATION	NS* (TUG) MNS*

- NOTES:-
- 5' INCOMBUSTIBLE COVERING TO BE PROVIDED AT THE ACCOMMODATION SPACE (INCLUDING GALLEY SPARE ABOVE FOT).
 - SELF CLOSING DOOR *
 - SINGAPORE (NON-COVENTION) SAFETY REGULATION TO BE COMPLIED WITH.

SHIP:		27M TWIN SCREW TUG	
OWNER		YARD NO.	
BUILDER		CLASS	NK
TITLE: GENERAL ARRANGEMENT			
DRAWN	CHECKED	SCALE	DRAWING NO. / REVISION NO.
		1:60	